

THERMA ELITE™



Insulated Carriage Style Garage Doors

A New Generation of Garage Doors



GARAGE DOOR DESIGN

GarageDoorDesign.com

Therma Elite Construction

The Therma Elite is Garage Door Design's new ***HYBRID*** garage door. We start with our Therma Tech II (***R10.4***) garage door with its time-proven sandwich construction. Galvanized, prepainted and wood grain embossed interior and exterior steel skins are pressure laminated to a 2" thick CFC-free expanded polystyrene core, forming an energy saving thermal break. The result is an extremely strong garage door with great thermal efficiencies. Using stainless steel fasteners we mechanically attach, then permanently adhere a precision cut 1/2" Extra® brand exterior grade wood composite smooth overlay to the door face to create an attractive high quality carriage style garage door. All exposed areas between the overlay and the exterior door skin are sealed with weatherproof caulking, then two primer coats and a final coat of high quality exterior enamel paint are applied for added protection.

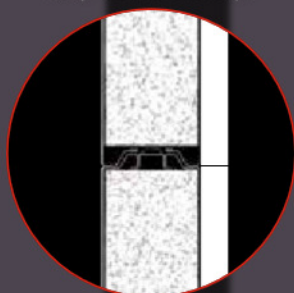
We have engineered a new beveled overlay profile which gives the Therma Elite a distinctive and pristine look unlike any other garage door. Utilizing special engraving programming with a beveled profile allows for unmatched quality. No inside rounded corners that are typical with CNC tooling. CNC precision cut with expert workmanship.



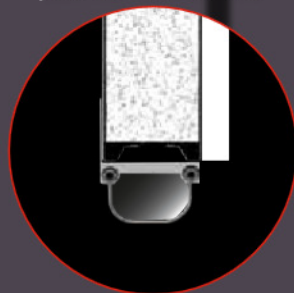
Window mullion, no joints, attractive detailing, crisp corners



18 gauge steel wrap around end caps



Tongue & groove weather joint with thermal break



Aluminum retainer with loop-type vinyl astragal

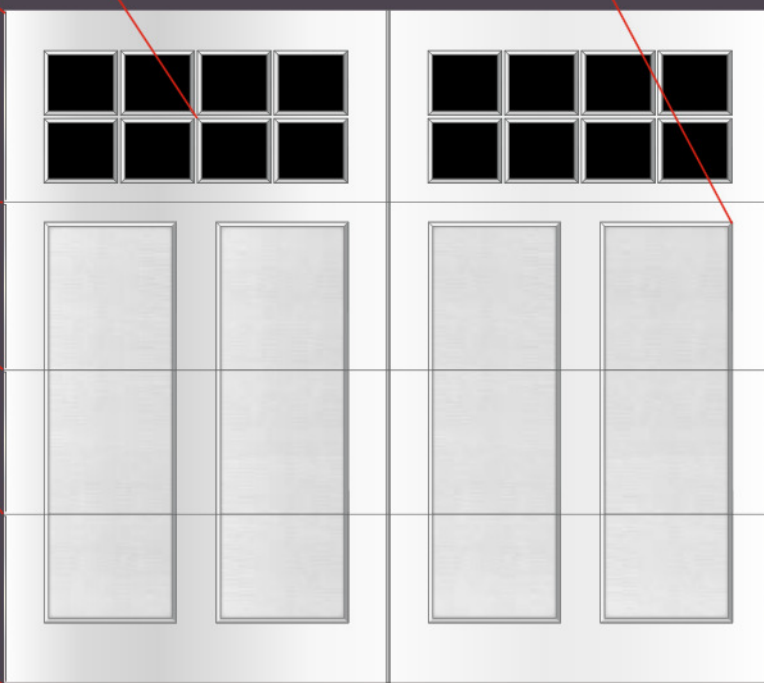


New
High Definition
Beveled Overlay Profile!

Overlay is caulked and sealed, 2 coats of primer is applied, then painted with a white enamel finish.

Crisp corner, no joint!

Beautiful wood grain embossing with smooth beveled overlay



Model D108S

Where Technology and Craftsmanship Meet



GDD's time proven
steel sandwich construction



CNC precision cut
overlay



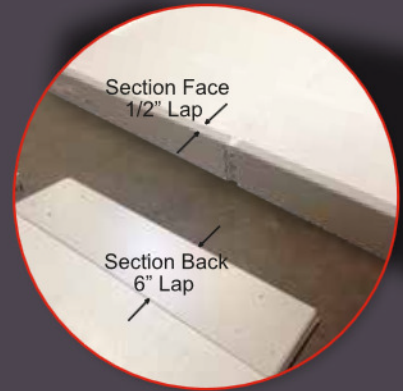
Overlay receives final inspection and
prefinish sanding before applying



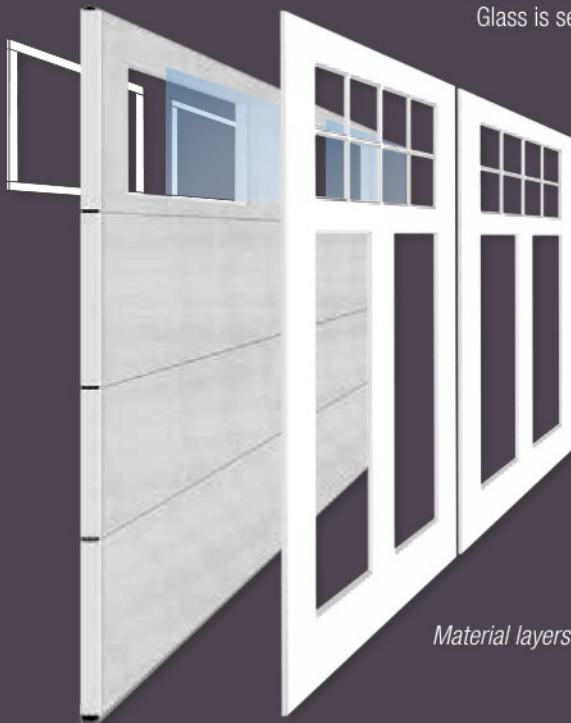
Overlay is permanently adhered to door
sections, all joints are sealed with
weatherproof caulking/sealant



Glass is sealed with bonding tape around perimeter
of window and on back of grid, providing superior weather
protection and making field painting much easier.
Glass is secured with prepainted aluminum
trim on interior of door



Wrap around 18 gauge steel end caps
encapsulate overlay and secured
with urethane adhesive



Material layers



Final door inspection before packaging

General Specifications

- Base door: 2" thick steel sandwich construction, polystyrene insulated core, R=10.4
- Steel door skins: embossed wood grain, galvanized and prepainted steel
- Overlay: 1/2" Extira® wood composite, mechanically fastened and permanently adhered to the door face
- Weather-joint: T&G with compressible joint seal extending the full width of the door
- Thermal break: interior and exterior door skins are isolated creating a thermal barrier
- Windows: 1/8" single pane clear tempered glass standard, see glass options page 7
- Finish: exterior of door and door edges are primed and finished painted with white high grade exterior enamel
- Sizes: up to 18'-2" wide in 1" increments, up to 12' high in 3" increments using 24", 21" and 18" door sections (180 sq. ft. maximum)
- Hardware: standard lift commercial grade galvanized torsion, see standard specifications and High Value Hardware Options page 7
- Bottom seal: flexible vinyl with aluminum retainer
- Warranty: Prorated Limited Lifetime, ask your dealer for details

A great design feature of the new Therma Elite is the uniformity and consistency of the overlay dimensions regardless of the door width or height. 24" top glass sections are used for an improved and superior appearance.

Beveled profile = .401" wide

Dimensions on flat:

Top rail = 5"

Bottom rail = 7-1/2"

Center stile = 5" (10" combined)

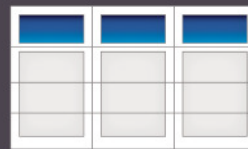
End stiles = 5"

Meeting rails = 4-7/8" combined

Window mullions = 3/8"



2-Panel
Up to 10'-2" Wide



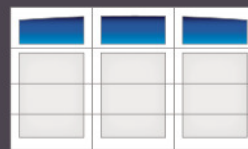
3-Panel
10'-3" to 14'-11" Wide



4-Panel
15'-0" to 18'-2" Wide



Single Car - 2 Panel
15'-0" Radius



Single Car - 3 Panel
15'-0" Radius



Double Car - 4 Panel
15'-0" Radius, 2-Arches
(58'-0" Radius Optional)

Basic Designs, Design Groups L and M



D0L0S



D0L0A



D1L0S



D1L0A



D2L0S



D2L0A



DAL0S



DAL0A



DVL0S



DVL0A



D0M0S



D0M0A



D1M0S



D1M0A



D2M0S



D2M0A



DAM0S



DAM0A



DVM0S



DVM0A



DXM0S



DXM0A



DXMXS



DXMXA

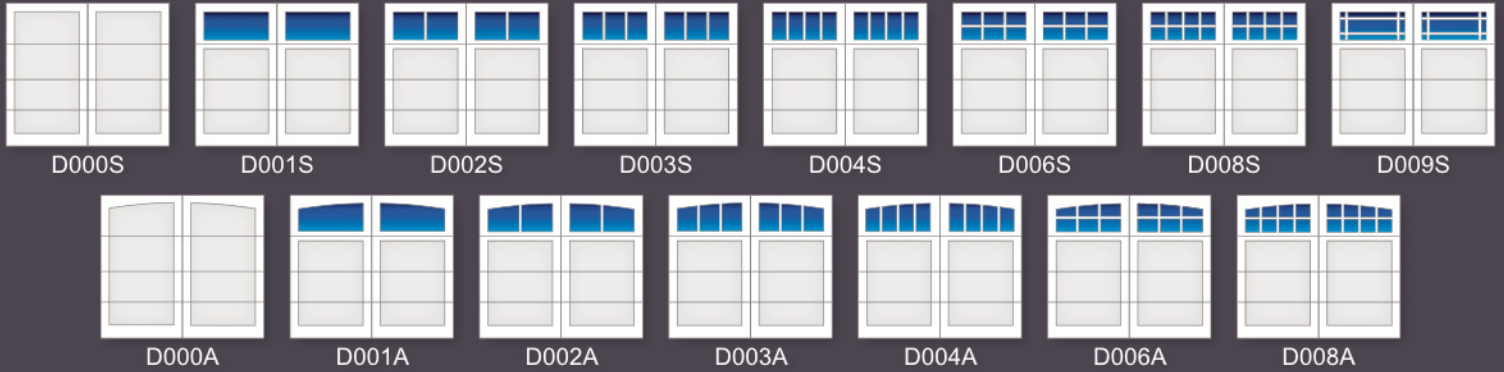


DKM0S



DKM0A

Design Group 0



Design Group 1



Design Group 2



Design Group 3



Design Group A



DA00S

DA01S

DA02S

DA03S

DA04S

DA06S

DA08S

DA09S



DA00A



DA01A



DA02A



DA03A



DA04A



DA06A



DA08A

Design Group B



DB00S

DB01S

DB02S

DB03S

DB04S

DB06S

DB08S

DB09S



DB00A



DB01A



DB02A



DB03A



DB04A



DB06A



DB08A

Design Group V



DV00S

DV01S

DV02S

DV03S

DV04S

DV06S

DV08S

DV09S



DV00A



DV01A



DV02A



DV03A



DV04A



DV06A



DV08A

Design Group X



DX00S

DX01S

DX02S

DX03S

DX04S

DX06S

DX08S

DX09S



DX00A



DX01A



DX02A



DX03A



DX04A



DX06A

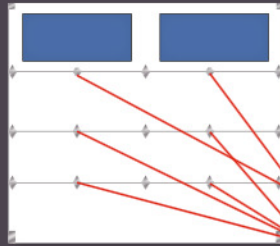


DX08A

Hardware Specifications and Hardware Options

Specifications:

- 15" radius commercial grade standard lift system
- 10,000 cycle oil tempered torsion springs
- 2" galvanized bracket mounted track
- 2" galvanized struts as size requires
- 2" 10-ball bearing nylon rollers
- 14 gauge galvanized hinges
- Double end hinges, long stem rollers on 16'-0" wide doors and over
- 14 gauge galvanized frequently spaced intermediate hinges located between standard hinges and intermediate half hinges under windows provide maximum support and maintain precise alignment of the exterior overlay.



Intermediate half hinges

Additional intermediate hinges

High Value Hardware Options:

- 12" radius, low headroom, follow roof line high lift and vertical lift hardware system
- 25,000 high cycle extended life torsion springs
- 3" industrial duty galvanized track & 3" ball bearing rollers*
- 3" galvanized struts
- Heavy duty continuous and reverse angle mounted track
- Double end hinges & long stem ball bearing nylon rollers**
- 11 gauge galvanized hinges
- Decorative exterior lift handle
- Powder coated hardware

*Standard on all doors exceeding 575# (approximately 160 sq.ft.)

**Standard on doors 16'-0" wide and larger

Optional Glass

Therma Elite is standard with 1/8 inch clear tempered glass. We offer optional glass of many types such as annealed, insulated, obscure and tinted. Custom glass is available up to 9/16 inch thick to meet your specific requirements. For more glass options and larger images visit GarageDoorDesign.com



Gray Tinted Glass



Bronze Tinted Glass



Mistlite Glass



Satin Etch Glass



P516 Obscure Glass



Gluechip Glass



Greylite Glass



Rain Glass

Optional Decorative Hardware



Traditional Series

Deco Kit B

Malleable Iron

Black Powder Coat Finish



Americana Series

Deco Kit C

Stamped Steel, Crinkle Textured

Black Powder Coat Finish

Replace Your Garage Door - A Great Investment

Garage doors cover about 1/3 of the front of an average home. By replacing old worn out doors with new Therma Elite garage doors, you will improve your home's curb appeal and add value to your home. The Therma Elite is available in both standard and non-standard sizes. Choose from 146 standard designs or your own custom designs, whichever will best compliment your home.



Before



After

Model DA06C - Custom Top Section

According to *Remodeling Magazine's Cost vs. Value Annual Reports*, year after year, a garage door replacement with upscale garage doors have continued to be one of the highest ROI's (Return On Investments) of all exterior remodeling projects.



Model D003S - Field Painted

Therma Elite overlays are made of an exterior grade wood composite. They are precision cut then mechanically attached with stainless steel fasteners and adhered to the door face with a waterproof adhesive to ensure the overlay will not separate from the door. All areas where the overlay meets the door face are sealed, then 2 coats of primer and a high quality white enamel finish is applied. The doors can be field painted (by others), any color you desire to best compliment your home.

The Therma Elite features a limited lifetime prorated warranty. Ask your Garage Door Designs dealer for details.

LiftMaster® Garage Door Design recommends LiftMaster®
Professional Line Garage Door Openers on all Garage Door Design garage doors.



GARAGE DOOR
Design.com

GARAGE DOOR DESIGN

3635 E. Covington Ave. Post Falls, ID 83854
800-833-9997 GarageDoorDesign.com

Dealer Name: